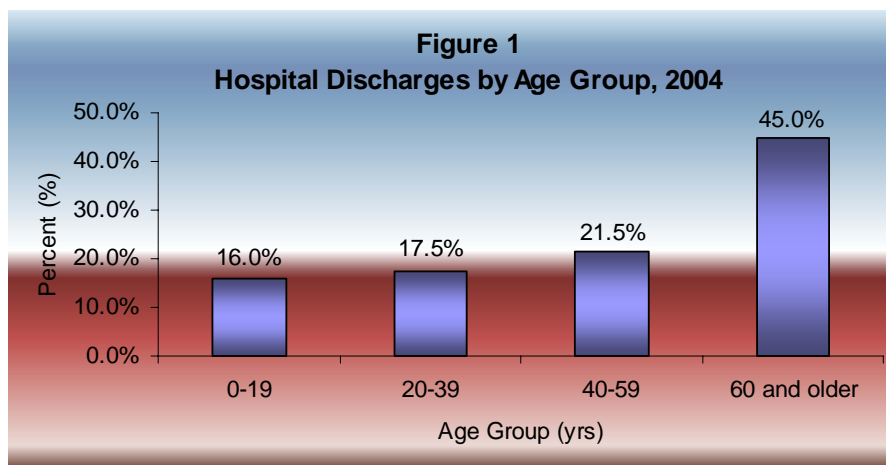


Hospital Discharge Summary, 2004

Patient discharges from Florida hospitals have increased from about 1.8 million in 1993 to about 2.5 million in 2004. This reflects an increase of approximately 38.9%. The largest number of discharges continues to be among those 60 years and older, at 45.0% of the total discharges (Figure 1).



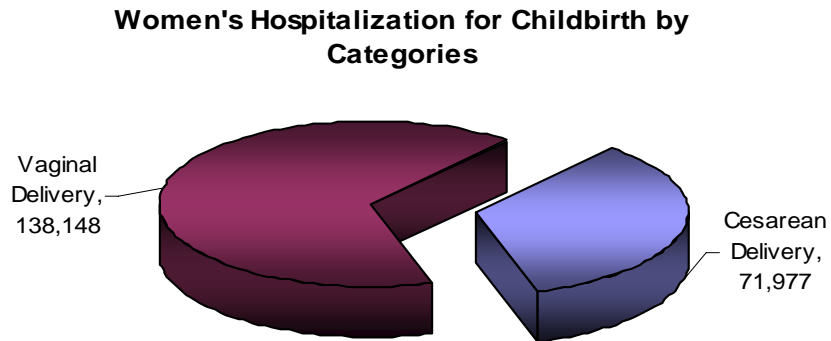
Women were hospitalized more often and at an earlier age than men; however, hospital stays for men were longer (Table 1). Of the women's hospitalizations, 14.9% (210,125) were for childbirth. Vaginal delivery was the highest rate due to childbirth (Figure 2).

Table 1
Hospital Discharges by Gender, 2004

Gender	Number	Percent (%) of Total	Average Age	Average Length of Stay
Female	1,413,824	56.8%	50	4.6
Male	1,076,883	43.2%	51	5.2
Total	2,490,713	100.0%	51	4.9

Note: Numbers may not add to total due to unclassified gender records.

Figure 2



White patients, at 66.3% of the total discharges, accounted for the most discharges in 2004. Among all racial/ethnic groups, the patients under the category “Other” on average were the youngest hospitalized, followed by Asian or Pacific Islander patients. Black Hispanic patients had the longest hospital stay (Table 2).

Table 2

Hospital Discharges by Race/Ethnicity, 2004

Race	Number	Percent (%) of Total	Average Age	Average Length of Stay
White	1,651,717	66.3%	56	4.8
Black	388,408	15.6%	40	5.2
White Hispanic	356,320	14.3%	42	4.7
Asian or Pacific Islander	15,408	0.6%	37	4.2
Black Hispanic	7,109	0.3%	40	6.2
American Indian/Eskimo/Aleut	2,943	0.1%	40	4.8
Other	47,497	1.9%	36	4.7
Total	2,490,713	100.0%	42	4.9

Note: Numbers may not add to total due to unclassified race records.

Total charges for 2004 hospitalizations were over \$64 billion dollars. Medicare and Medicare HMO accounted for over half of the total charges at 52.5%. Commercial insurance accounted for the second largest total charges with 26.4% (Table 3).

Table 3
Hospital Discharges by Principal Payer, 2004

Payer	Number	Total Charges	Percent (%) of Total Charges	Average Charges
Medicare & Medicare HMO	1,050,889	\$33,800,523,165	52.5%	\$32,164
Commercial Insurance	746,821	\$17,024,423,059	26.4%	\$22,796
Medicaid & Medicaid HMO	427,192	\$7,675,082,499	11.9%	\$17,966
Self Pay & Charity	184,613	\$3,843,088,856	6.0%	\$20,817
Other State/Local Government	29,101	\$723,413,347	1.1%	\$24,859
Champus	22,204	\$504,161,494	0.8%	\$22,706
Workers' Compensation	12,609	\$447,634,822	0.7%	\$35,501
Other	8,602	\$170,345,885	0.3%	\$19,803
VA	5,623	\$167,739,880	0.3%	\$29,831
Kidcare	3,059	\$64,305,669	0.1%	\$21,022
Total	2,490,713	\$64,420,718,676	100.0%	\$25,864

Over 80% of the patients were discharged home from the hospital. Table 4 displays patient discharge status for 2004.

Table 4
Hospital Discharges by Patient Discharge Status, 2004

Discharge Status	Number	Percent (%)
Home	2,021,349	81.2%
Skilled Nursing Facility	212,823	8.5%
Other Institutions	71,464	2.9%
Expired	55,969	2.2%
Short-Term General Hospital	49,252	2.0%
Left against medical advise	28,893	1.2%
Hospice	28,576	1.1%
Intermediate Care Facility	22,387	0.9%
Total	2,490,713	100.0%

Source: State of Florida, Agency for Health Care Administration, Florida Center for Health Information and Policy Analysis, 2004